

DRUG DEVELOPMENT & LUNG DISEASES

SMC LABORATORIES' LUNG DISEASE MODEL CATALOG

Idiopathic Pulmonary Fibrosis
(IPF)

Chronic Obstructive Pulmonary
Disease (COPD)

Acute Lung Injury (ALI) /

Acute Respiratory Distress
Syndrome (ARDS)

Systemic Sclerosis-associated
Idiopathic Lung Disease (SSc-ILD)

Silicosis



SMC Laboratories, Inc.

THE MODEL LINEUP

Idiopathic Pulmonary Fibrosis (IPF)

Bleomycin-induced model

Chronic Bleomycin-induced model

Chronic Obstructive Pulmonary Disease (COPD)

PPE-induced model

Acute Lung Injury (ALI) / Acute Respiratory Distress Syndrome (ARDS)

LPS-induced model

Systemic Sclerosis-associated Idiopathic Lung Disease (SSc-ILD)

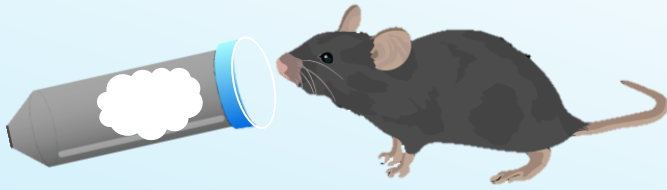
Bleomycin-induced model

Silicosis

Silica-induced model

Administration via Microsprayer®

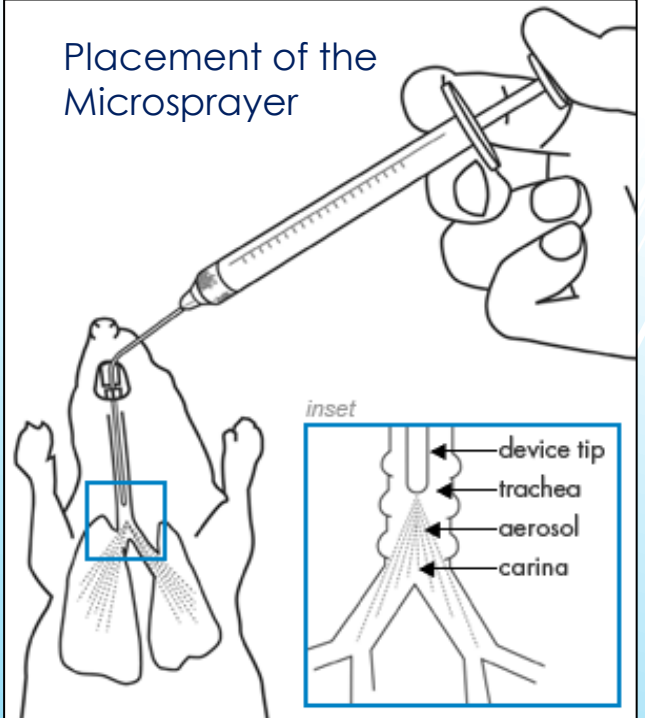
Anesthesia with Isoflurane



Female C57BL/6J

- ✓ Particle size: 1.6-22 μm (analyzed with water)
- ✓ Administrable volume: 25-250 μl

Placement of the Microsprayer



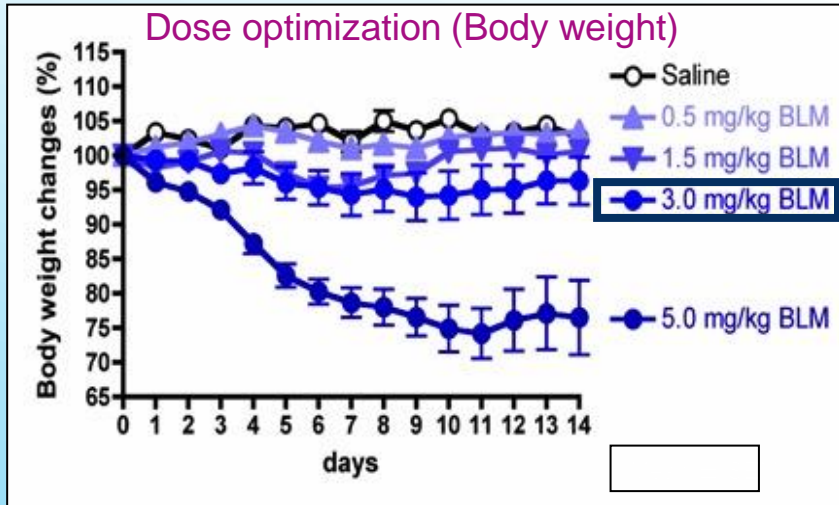
Using the intra tracheal administration route to induce the disease in the model mouse results in a more uniform phenotype than other administration routes. The inducing agent is administered in the trachea, so that the loss is close to Zero and the Microsprayer® nebulizes the solution with a low particle size so that the agent is distributed evenly through the lung lobes.



"It is recommended to avoid highly viscous or frothy vehicles when administering IT because they are difficult to aerosolize and mice tend to have breathing difficulties after administration."

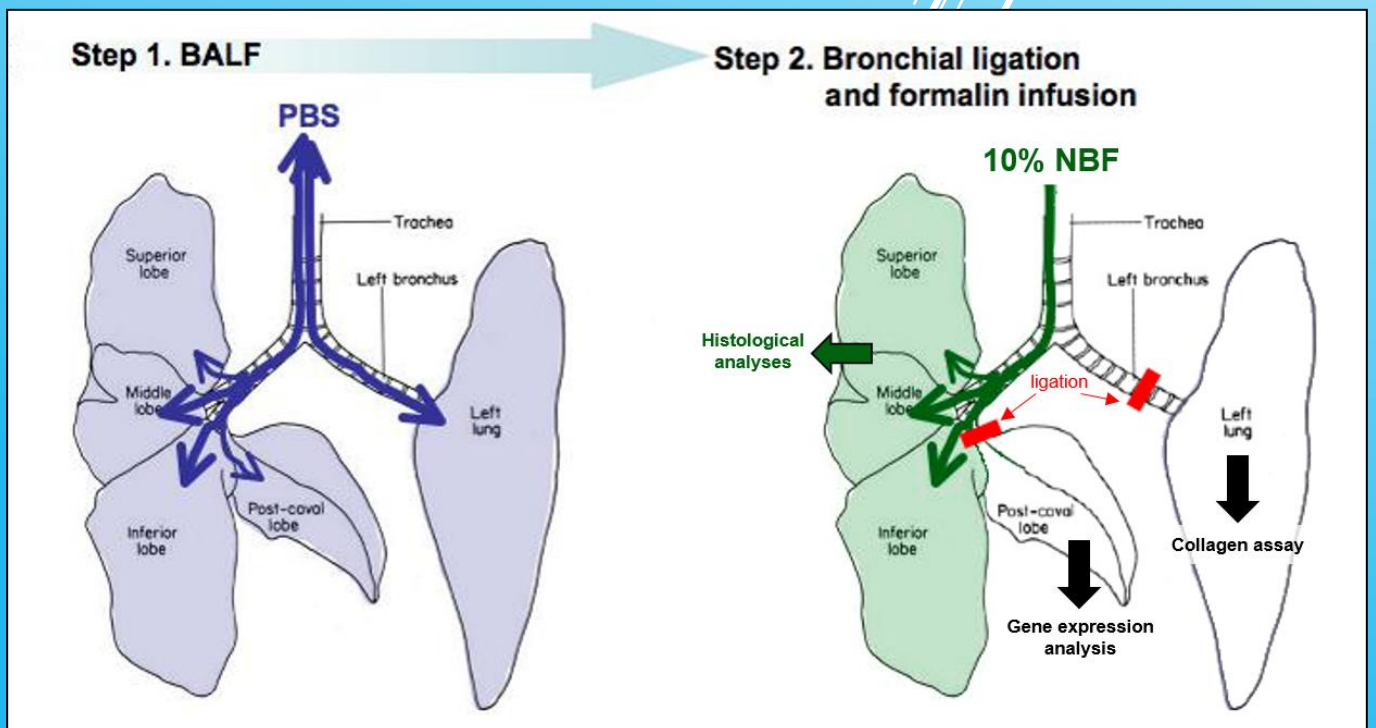
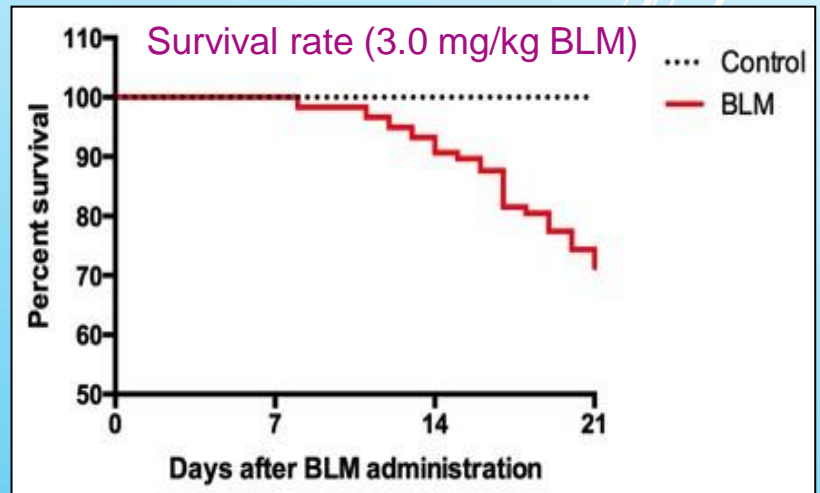
– SMC Laboratories' Research Team

Optimization & Sampling of Bleomycin-induced Lung Models



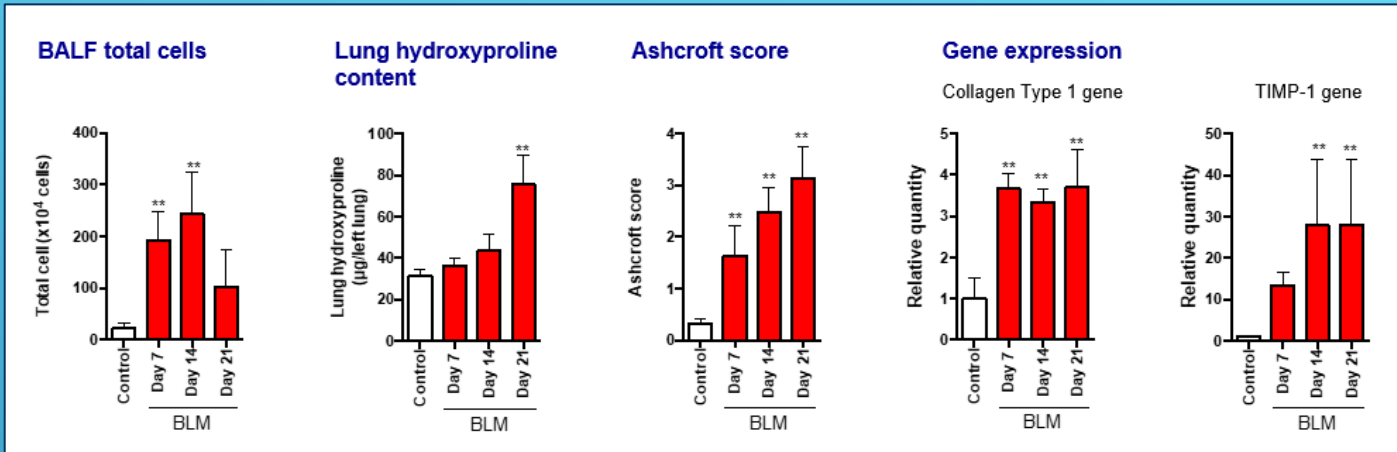
Our model has been optimized for the right balance between severity of fibrosis development...

... and the survival of the mice at the take-down time at 21 days after induction, when the fibrosis peaks.

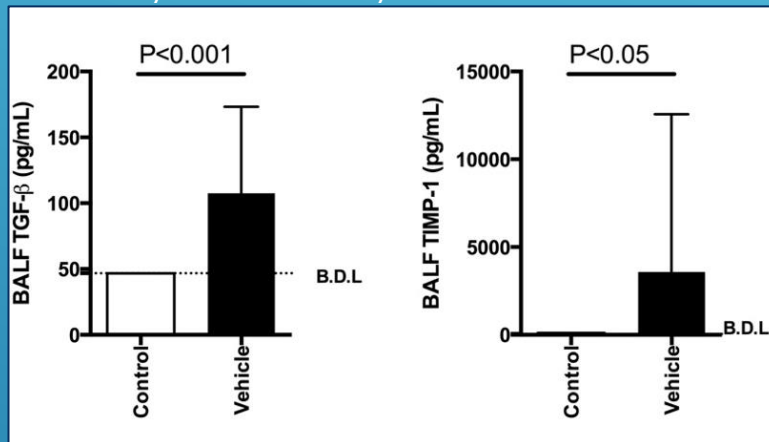


IPF - BLM-induced model -

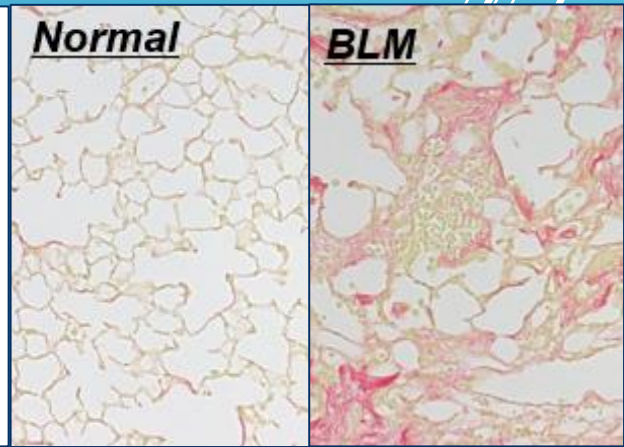
BALF Analysis: Hydroxyproline | Ashcroft Score | Gene Expression



BALF Cytokine Analysis

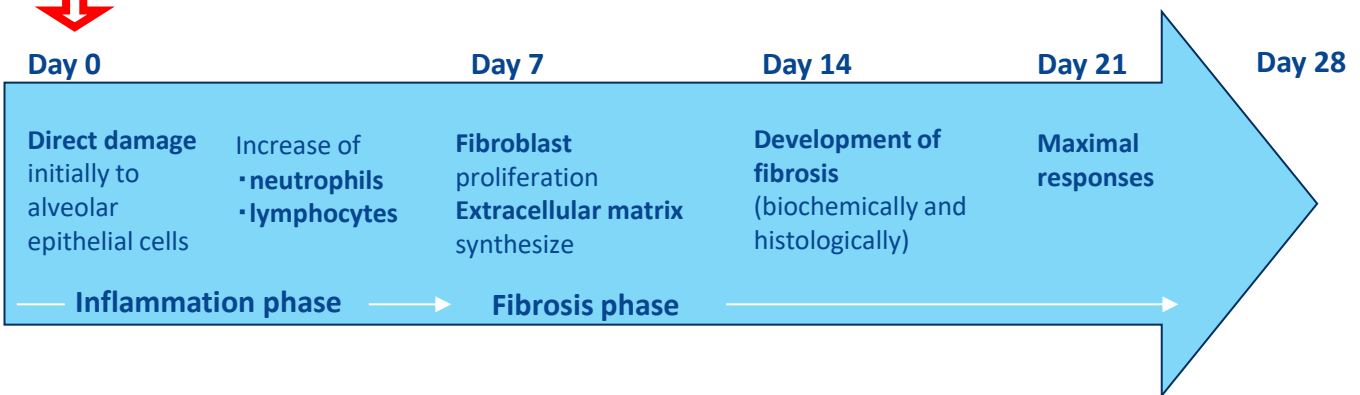


Sirius Red Staining

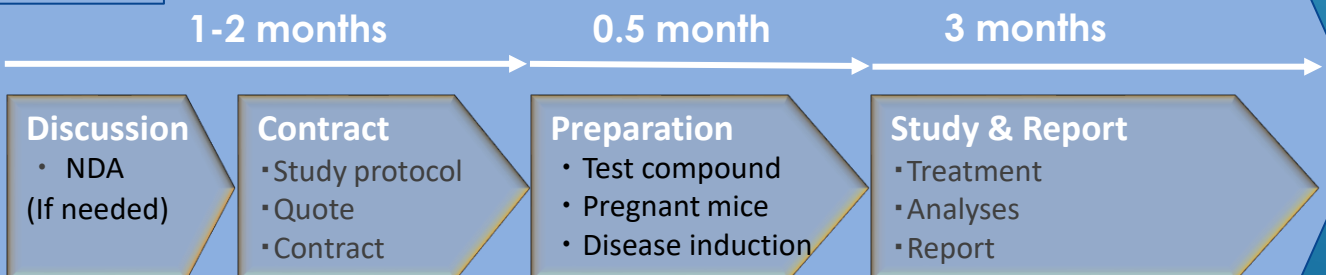


BLM i.t.

Disease Progression



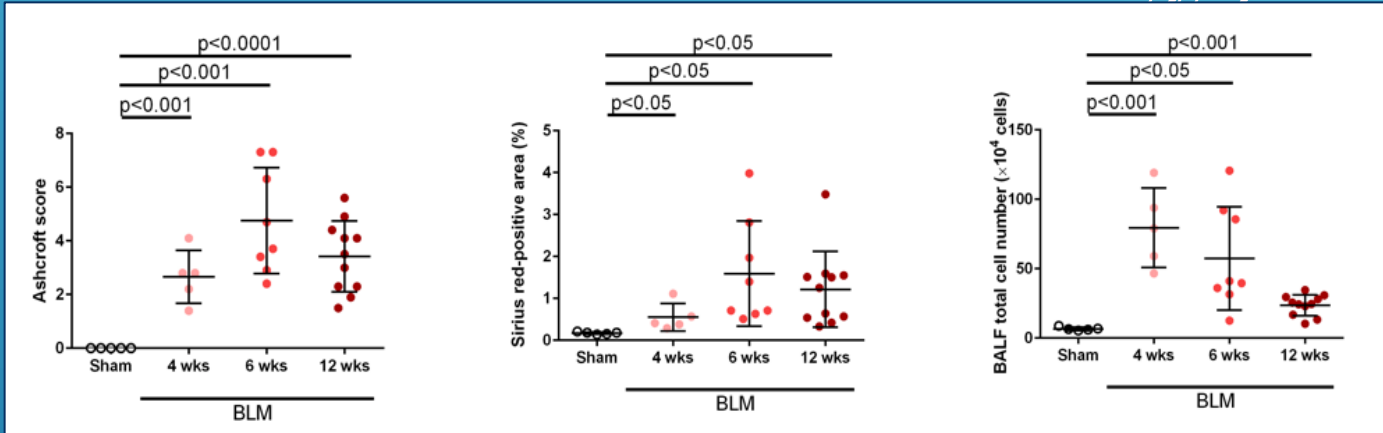
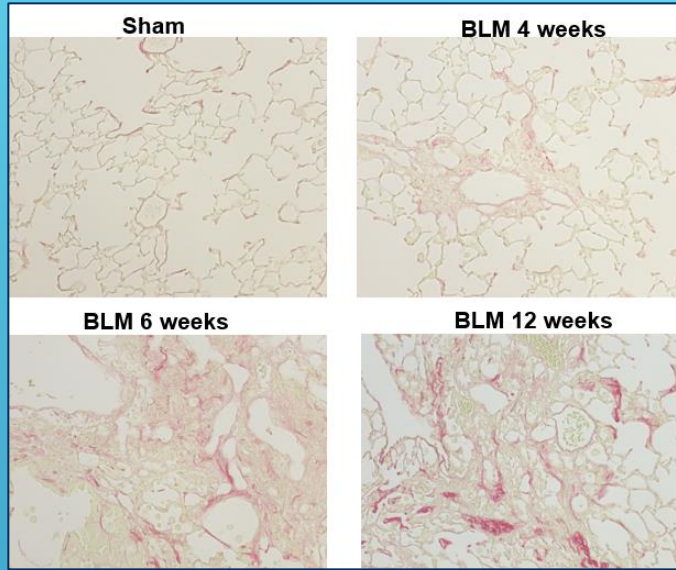
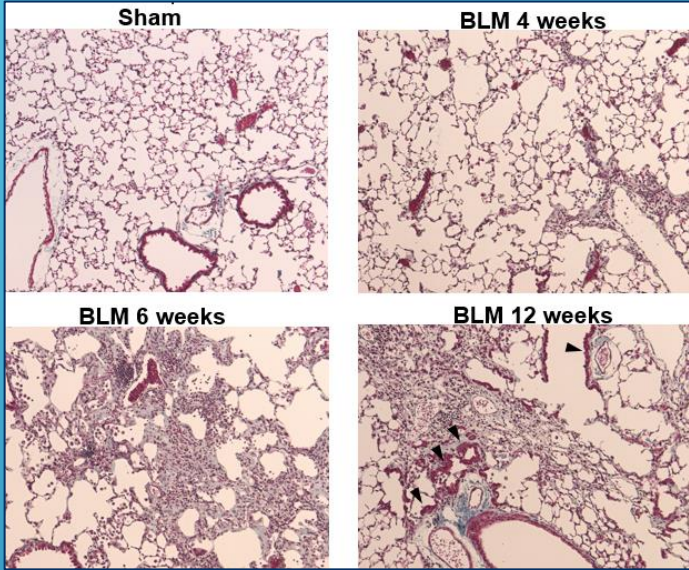
TIMELINE



IPF - Chronic BLM-induced model -

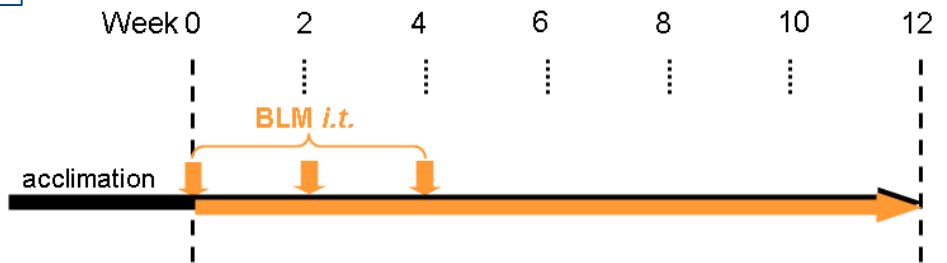
Hyperplastic alveolar epithelial cells

Sirius Red positive area



Disease Induction

C57BL/6J, female,
6 weeks of age at
induction



TIMELINE

1-2 months

0.5 month

3 months

Discussion

- NDA (If needed)

Contract

- Study protocol
- Quote
- Contract

Preparation

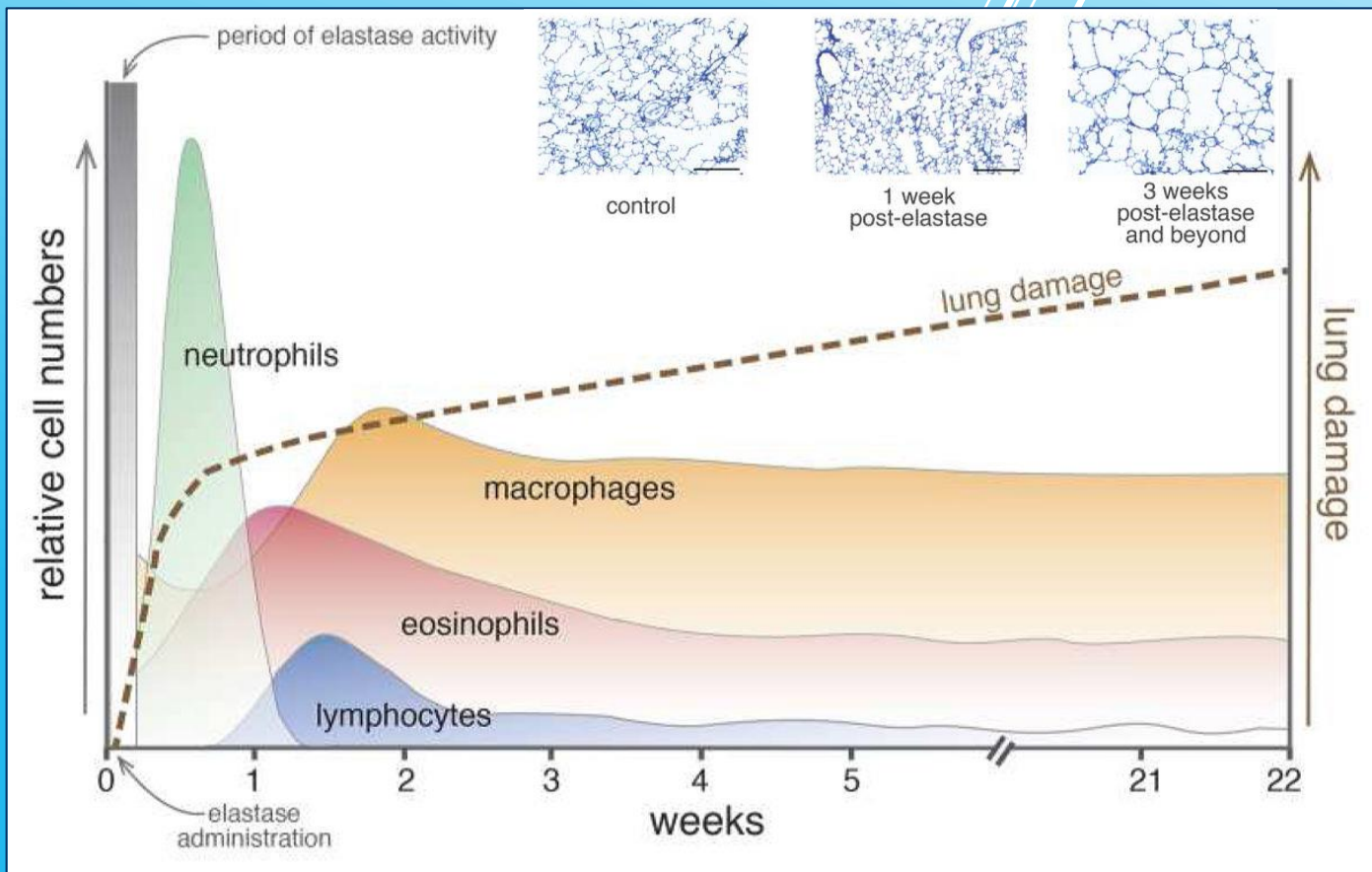
- Test compound
- Disease induction

Study & Report

- Treatment
- Analyses
- Report

Chronic Obstructive Pulmonary Disease (COPD)

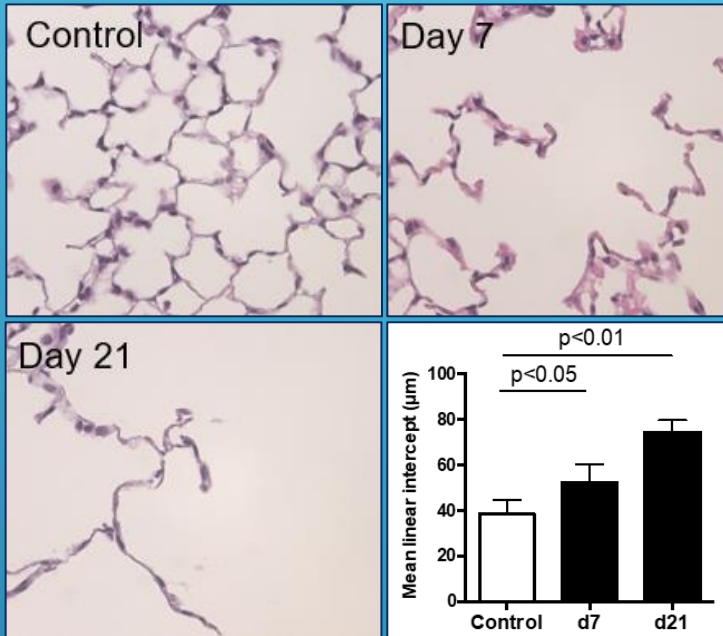
- COPD is recognized as a major cause of death in developed countries and is characterized by chronic, slowly progressive airway obstruction and destruction.
- Histological and morphological characteristic features are compatible with those of panacinar emphysema.
- Induced morphological and functional changes are detectable in the long term and the lesion severity can be modulated enzyme dose.
- The cellular response following elastase challenge is characterized by a swift influx of neutrophils, succeeded by the recruitment of other immune cells.



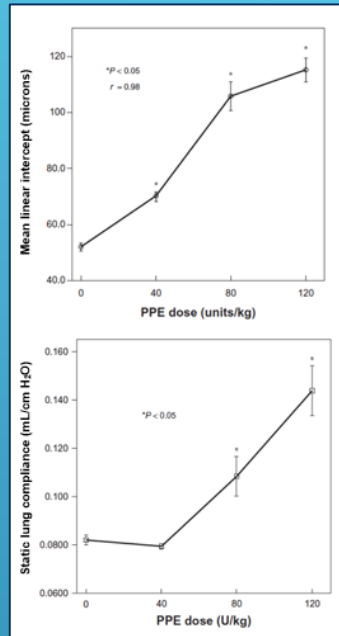
COPD - PPE-induced model -

- ✓ Effective destruction of bronchial alveolar epithelium within 21 days after PPE administration
- ✓ Adjustment of disease severity in the model by dosing concentration of PPE

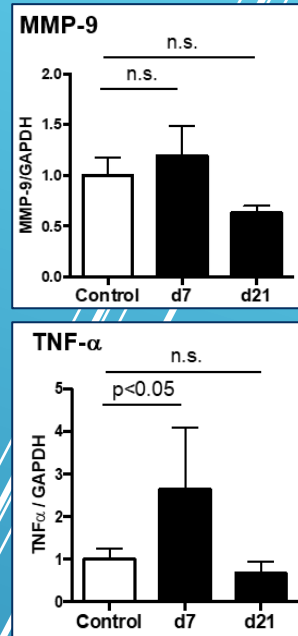
Mean Linear Intercept



Dose dependency

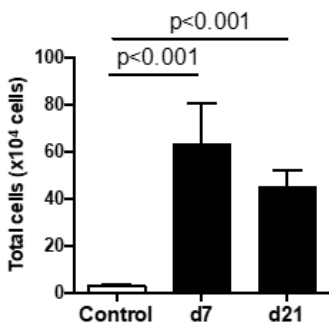


Gene Expression

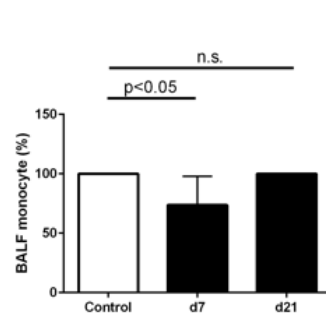


Analysis of immune cells in Bronchial Alveolar Lavage

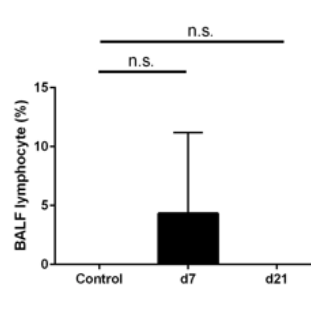
BALF total cells



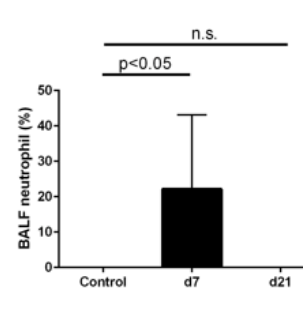
BALF monocyte



BALF lymphocyte



BALF neutrophil



TIMELINE

1-2 months

0.5 month

3 months

Discussion

- NDA (if needed)

Contract

- Study protocol
- Quote
- Contract

Preparation

- Test compound
- Disease induction

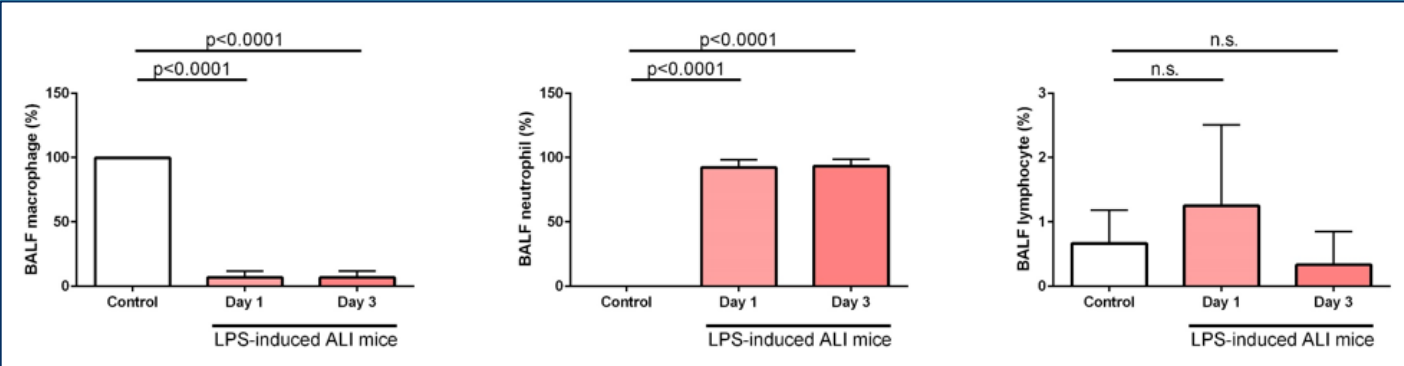
Study & Report

- Treatment
- Analyses
- Report

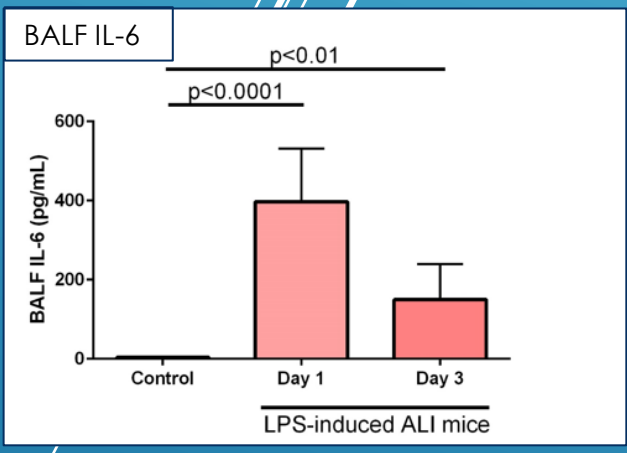
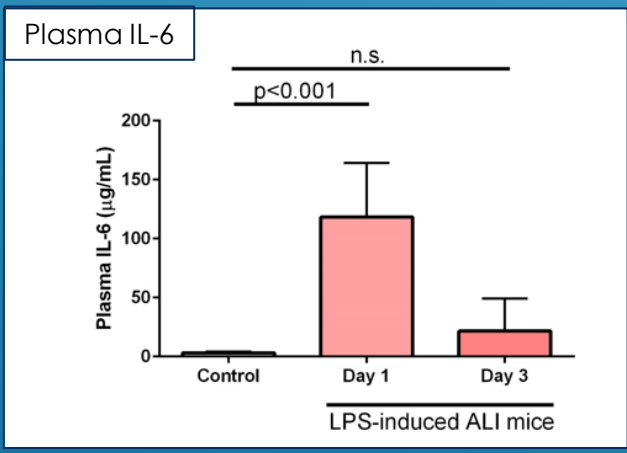
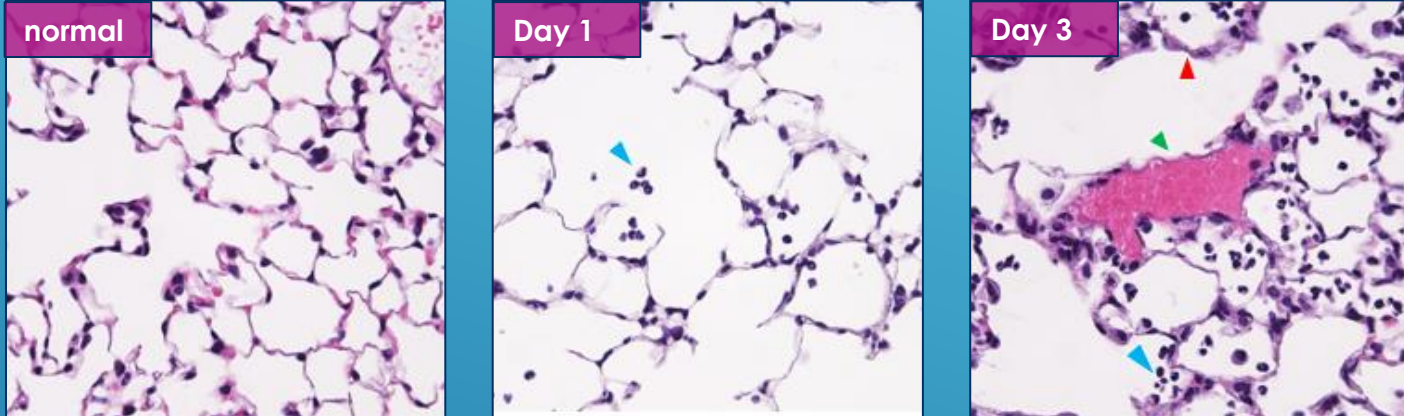
Acute Lung Injury / Acute Respiratory Distress Syndrome

- LPS-induced model -

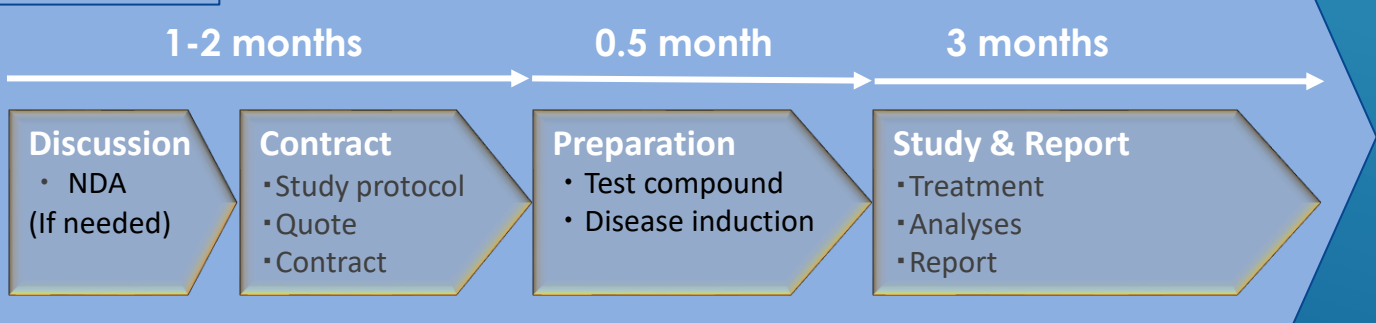
Changes of cell types in BALF



Alveolar and interstitial inflammatory cell infiltration, hemorrhaging and thickening of the alveolar walls



TIMELINE

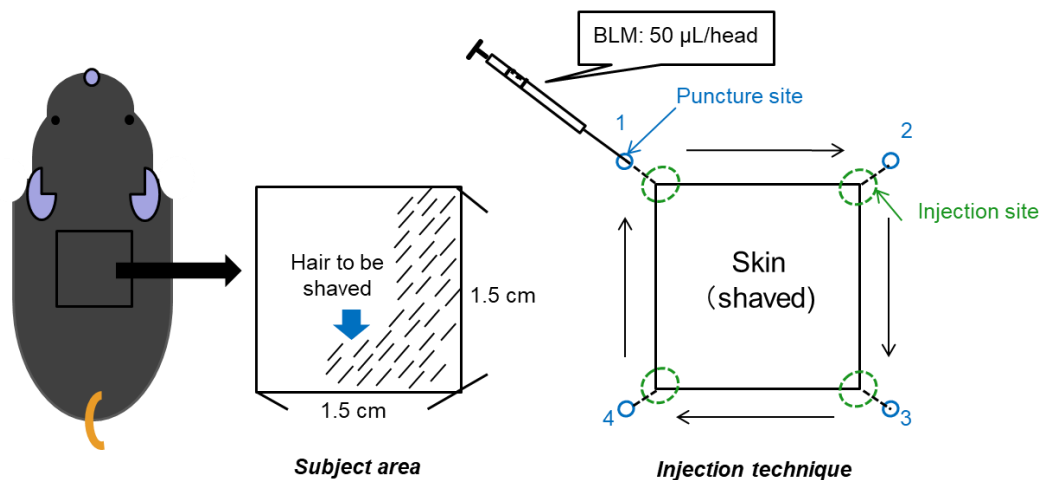


Systemic Sclerosis-associated Interstitial Lung disease

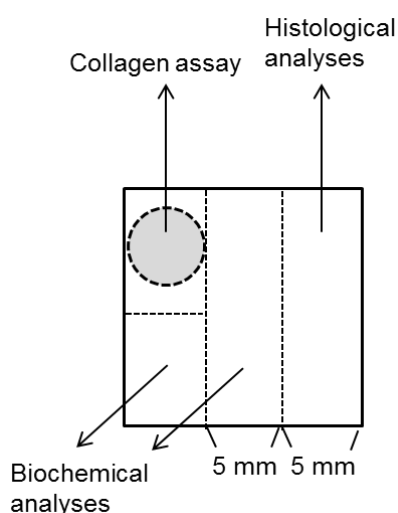
Key Characteristics in the SSc-ILD model

- Dermal thickness and collagen content in the skin are increased in bleomycin injected mice.
- Not only skin is affected, but also the fibrotic region and collagen content in the lung are increased by indirect bleomycin exposure.
- This model may provide advantages to test therapeutic interventions for SSc-ILD.

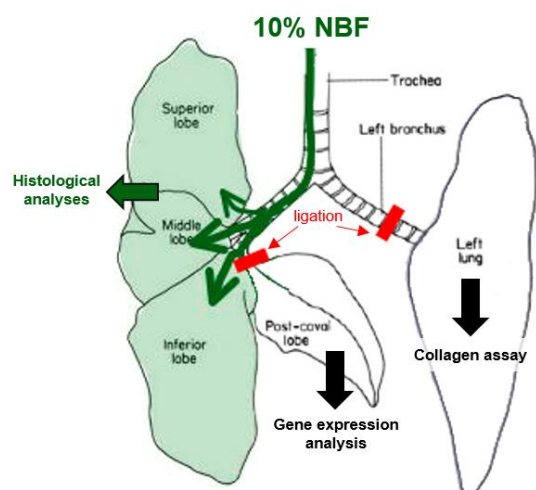
Injection technique



Skin sampling



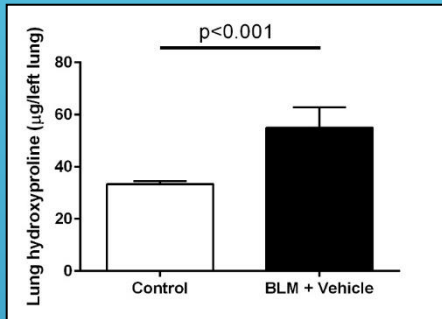
Lung sampling



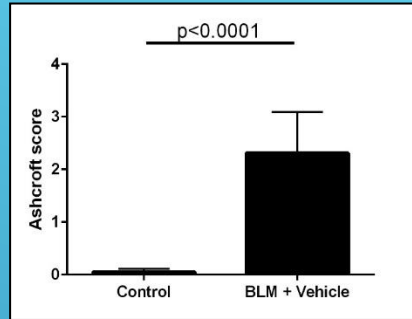
Systemic Sclerosis-associated Interstitial Lung disease

- Bleomycin-induced model -

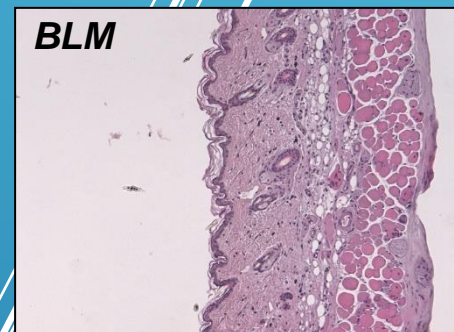
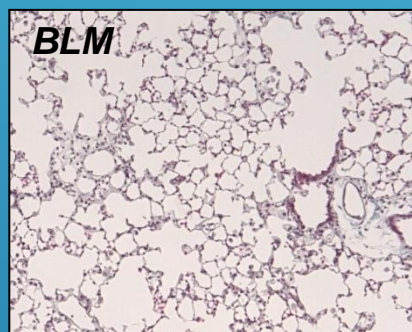
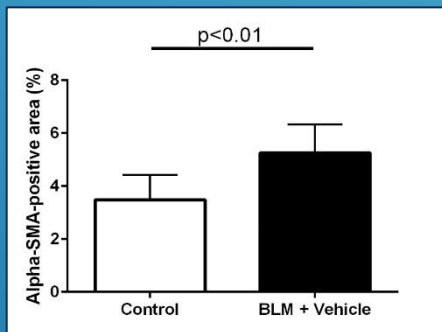
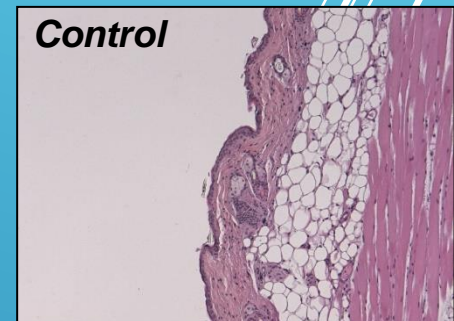
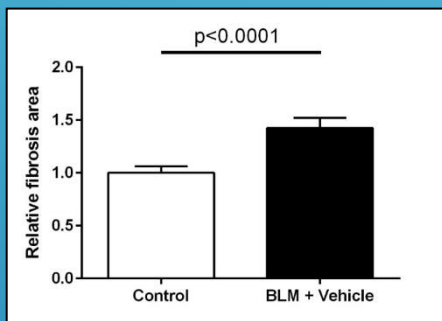
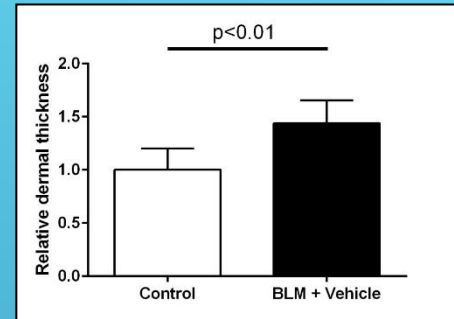
Lung fibrosis



Ashcroft score



Dermal thickness



Disease Induction

Female C57BL6/J 7 weeks old

Day 0

Day 28



Bleomycin (4.0 mg/mL, 50 µL), subcutaneous, alternate days, for 4 weeks

TIMELINE

1-2 months

0.5 month

3 months

Discussion

- NDA (If needed)

Contract

- Study protocol
- Quote
- Contract

Preparation

- Test compound
- Disease induction

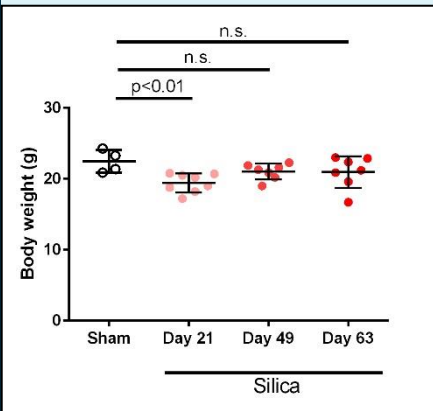
Study & Report

- Treatment
- Analyses
- Report

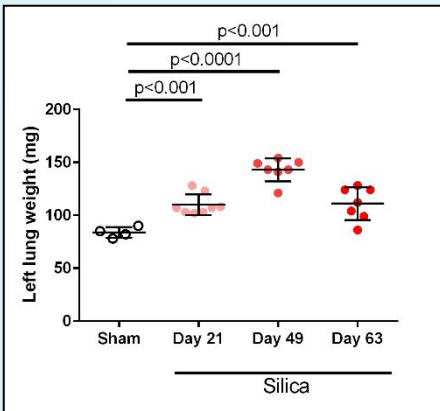
Silicosis

- Silica-induced Model-

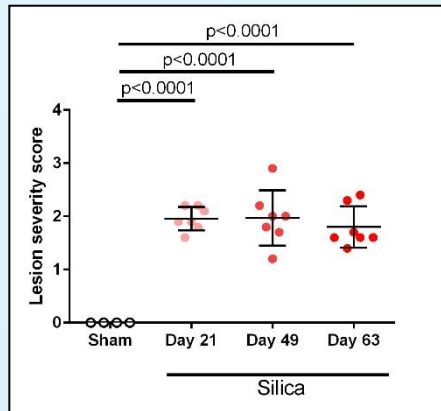
Body weight



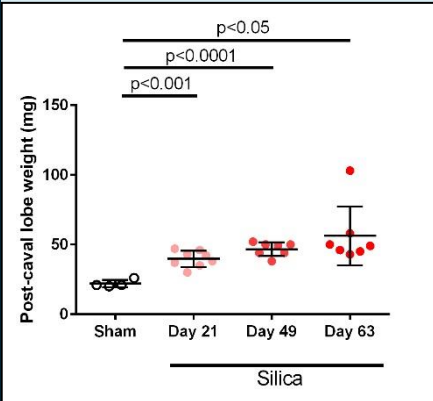
Left Lung weight



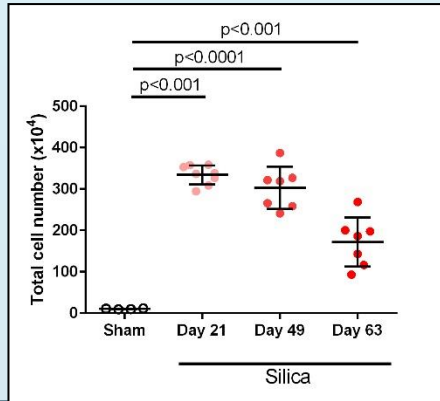
Lesion severity score



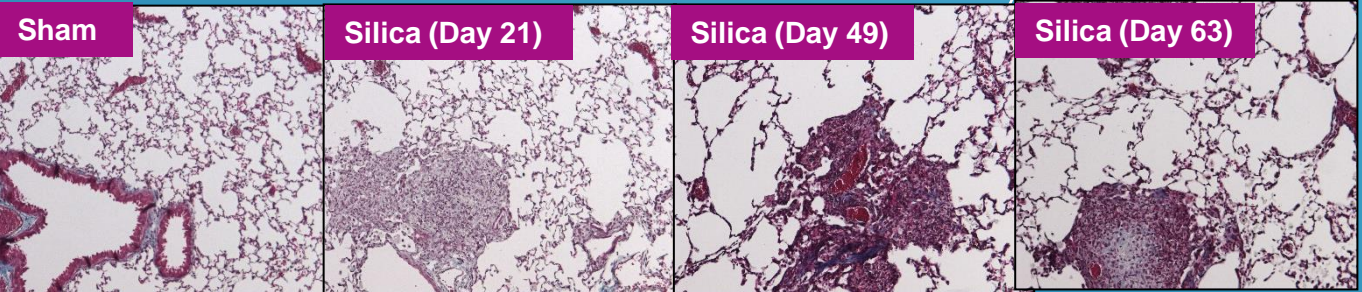
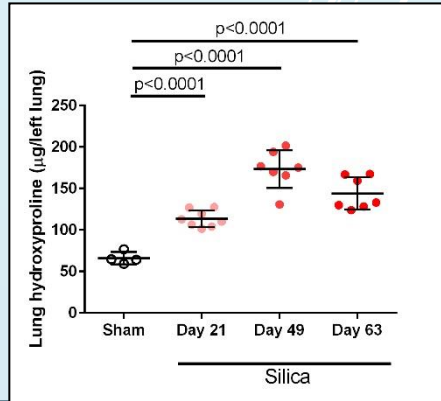
Post-caval lobe weight



Total cell number



Lung Hydroxyproline



- ✓ Disease induction: Oropharyngeal administration of silica causes inflammation and fibrosis of the lungs
- ✓ Fibrosis feature: **Scattered throughout the lung, nodule formation**

TIMELINE

1-2 months

0.5 months

4 months

Discussion

- NDA (if needed)

Contract

- Study protocol
- Quote
- Contract

Preparation

- Test compound
- Disease induction

Study & Report

- Treatment
- Analyses
- Report